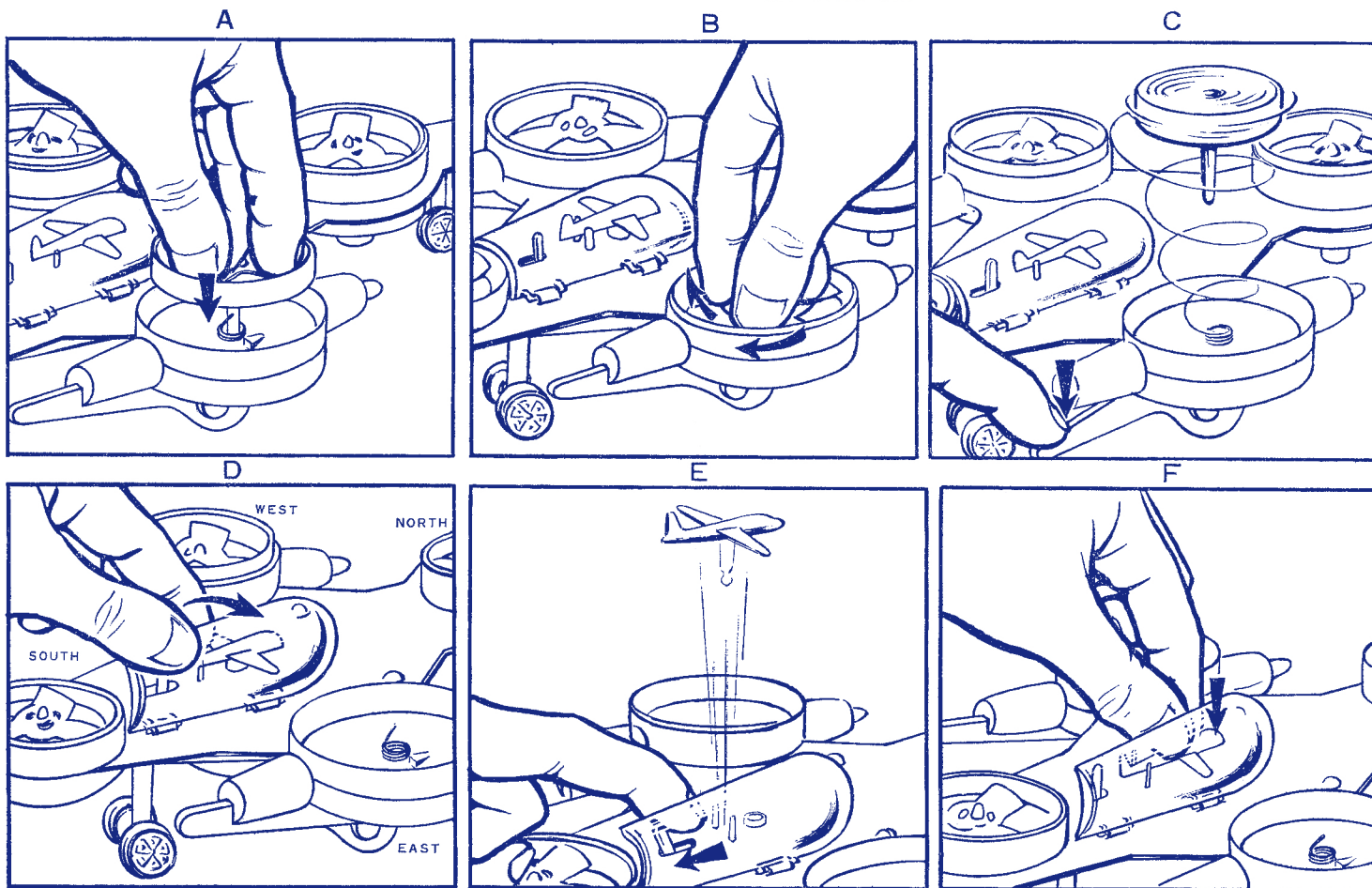


INSTRUCTION SHEET

NUCLEAR PULSE-SPACE STATION



1. The two 'Flying Interceptor Missiles' are fitted in the 'East/West' blade housing sections.
2. The two metallised rotor blades are fixed, and are interchangeable with the 'Flying Interceptor Missiles'. To release the metallised rotor blades, remove the connecting pieces on the base of the 'North/South' housing sections.
3. Fit 'Flying Interceptor Missiles' firmly onto the spring. (See Sketch 'A').
4. To avoid overwinding, it is recommended that the 'Flying Interceptor Missiles' should be wound in a clockwise direction 4 to 5 turns. (See Sketch 'B').
5. To release 'Flying Interceptor Missile', press down lever. (See Sketch 'C').
6. To launch 'Secret Explorer Ship' open see-through integral launch pad hatch and press back launching button. (See Sketches 'D' & 'E')
7. The 'Secret Explorer Ship' can be re-launched by pressing in to Launching section. (See Sketch 'F').